

Cloudera Manager



End-to-End Administration for Apache Hadoop

Cloudera Manager is the industry's first end-to-end management application for Apache Hadoop. By delivering granular visibility into and control over every part of the Hadoop cluster, Cloudera Manager empowers enterprise operators to improve cluster performance, enhance quality of service, increase compliance and reduce administrative costs.

Spend Your Time Using Hadoop to Solve Business Problems, Rather Than Managing Your Cluster

As with any distributed computing or storage platform, deployment and ongoing administration of a Hadoop stack can be difficult and time consuming. Deciding which components and versions to deploy based on use cases; assigning roles for nodes; effectively configuring, starting and managing services across the cluster; and performing diagnostics to optimize cluster performance require significant expertise. Yet, with tightened budgets and an ever-increasing list of initiatives to manage, most IT shops find themselves resource constrained. In-house Hadoop expertise is difficult and prohibitively expensive for most organizations to acquire. Cloudera Manager eliminates these obstacles and enables you to spend your time using Hadoop, rather than managing the cluster.

With Cloudera Manager, you can easily deploy and centrally operate a complete Hadoop stack. The application automates the installation process, reducing deployment time from weeks to minutes; gives you a cluster-wide, real time view of nodes and services running; provides a single, central place to enact configuration changes across your cluster; and incorporates a full range of reporting and diagnostic tools to help you optimize cluster performance and utilization.

Cloudera Manager: Full lifecycle management for Apache Hadoop.

DEPLOY

Automated, wizard-based installation

DISCOVER

Service health and activity monitoring

Events and alerts

DIAGNOSE

Job analytics

Log search

Configuration recommendations

Support integration

ACT

Service, configuration and security management

OPTIMIZE

Operational reports

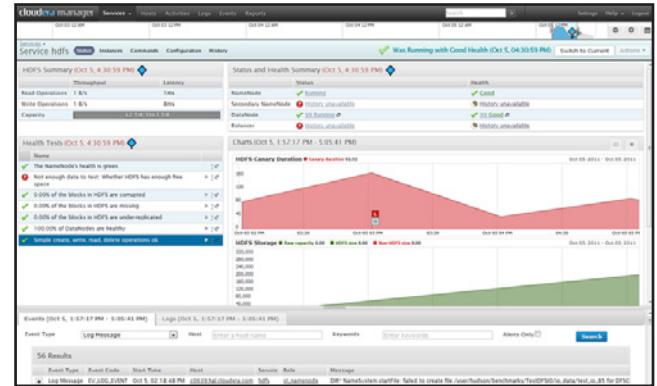
“ The management suite delivered in Cloudera Enterprise fills an important need for managing our Hadoop cluster. ”



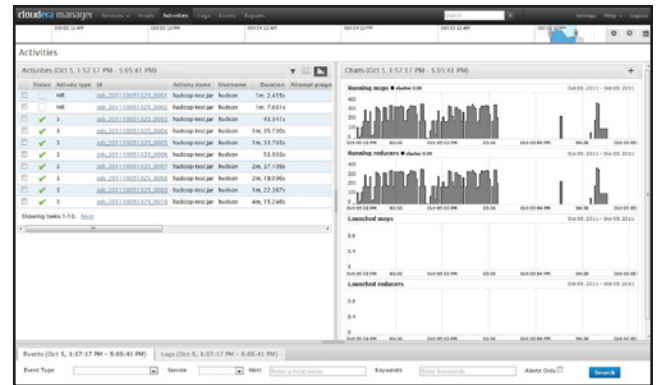
Key Features of Cloudera Manager

Feature	Benefit
Automated Hadoop Deployment	Installs the complete Hadoop stack in minutes via a wizard-based interface
Centralized Management	Gives you complete, end-to-end visibility and control over your Hadoop cluster from a single interface
Global Time Control	Establishes the time context globally for almost all views Correlates jobs, activities, logs, system changes, configuration changes and service metrics along a single timeline to simplify diagnosis
Service & Configuration Management	Set server roles, configure services and manage security across the cluster Gracefully start, stop and restart of services as needed
Role-Based Administration	Supports Administrator and Read-Only users
Audit Trails	Maintains a complete record of configuration changes with the ability to roll back to previous states
Proactive Health Checks	Monitors dozens of service performance metrics and alerts you when you approach critical thresholds
Intelligent Log Management	Gather, view and search Hadoop logs collected from across the cluster Scans Hadoop logs for irregularities and warns you before they impact the cluster
Event Management	Creates and aggregates relevant Hadoop events pertaining to system health, log messages, user services and activities and make them available for alerting and searching
Alerting	Generates email alerts when certain events occur
Activity Monitoring	Consolidates all cluster activity into a single, real-time view
Host Monitoring	View information pertaining to hosts in your cluster including status, resident memory, virtual memory and roles
Operational Reports	Visualize current and historical disk usage by user, group and directory Track MapReduce activity on the cluster by job or user
Support Integration	Takes a snapshot of the cluster state and automatically sends it to Cloudera support to assist with resolution

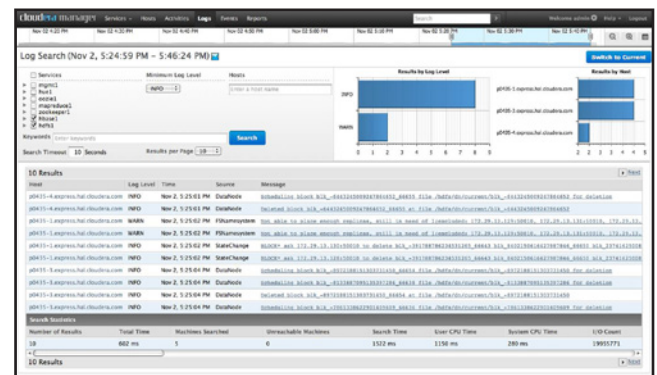
View Service Health and Performance



Monitor and Diagnose Cluster Workloads



Gather, View and Search Hadoop Logs



Cloudera Enterprise:
Run Apache Hadoop in production with repeatable success

Cloudera Manager is available, along with Cloudera Support, as part of the Cloudera Enterprise subscription. With Cloudera Enterprise, you can operationalize your Hadoop system with ease.

Cloudera Manager Editions

	 FREE EDITION	 ENTERPRISE EDITION
	Cloudera Manager Free Edition makes it easy for anyone to get, install, configure and perform basic management of an Apache Hadoop cluster. The software supports up to 50 nodes and is available as a free download at cloudera.com/downloads .	The Enterprise edition of Cloudera Manager is the industry's first end-to-end management application for Apache Hadoop that includes revolutionary features such as proactive health checks and intelligent log management. The Enterprise edition of Cloudera Manager is available as part of the Cloudera Enterprise subscription.
Max Number of Nodes Supported	50	Unlimited
Automated Deployment	✓	✓
Host-Level Monitoring	✓	✓
Secure Communication Between Server and Agents	✓	✓
Service Management		
Manage HDFS, MapReduce, HBase, Hue, Oozie and Zookeeper	✓	✓
Automated Configuration	✓	✓
Audit Trail	✓	✓
Start/Stop/Restart Services	✓	✓
Add/Restart/Decommission Role Instances	✓	✓
Configuration Versioning and History		✓
Support for Kerberos		✓
Service Monitoring		
Proactive Health Checks		✓
Status and Health Summary		✓
Performance Monitoring		✓
Intelligent Log Management		✓
Events Management and Alerts		✓
Activity Monitoring		✓
Operational Reporting		✓
Global Time Control		✓
Support Integration		✓